



MINNESOTA CONCRETE & MASONRY CONTRACTORS ASSOCIATION

2014  
AWARDS

EXCELLENCE IN  
CONCRETE & MASONRY DESIGN  
AND CONSTRUCTION AWARDS



**R & D Systems  
Hematology Building  
MINNEAPOLIS, MN**

*Category:* Masonry Commercial – Office & Retail  
*Owner:* R & D Systems  
*Architect/Designer:* Hagen Christensen & McIlwain Architects PA  
*General Contractor:* RJM Construction  
*Masonry Contractor:* Donald R. Frantz Concrete Construction, LLC

**Evans Hall  
Carleton College  
NORTHFIELD, MN**

*Category:* Masonry Commercial – Public Use  
*Owner:* Carleton College  
*Architect/Designer:* Collaborative Design Group, Inc.  
*General Contractor:* PCL Construction Services Inc.  
*Masonry Contractor:* American Masonry Restoration



**East Interceptor Sanitary Sewer  
District Facility Phase 2/3  
DULUTH, MN**

*Category:* Greater Minnesota - Commercial Concrete –  
Functional/Industrial  
*Owner:* City of Duluth  
*Architect/Designer:* MSA Professional Services  
*General Contractor:* Rice Lake Construction Group  
*Concrete Contractor:* Rice Lake Construction Group



**W**

elcome to the 33rd Annual Excellence in Concrete and Masonry Design and Construction awards. Join us in honoring the owners, architects, designers and engineers that recognize the beauty, value and durability of concrete and masonry construction. Thank you for your commitment to our industry and for allowing us to leave behind a lasting legacy of quality projects that will be around for future generations to enjoy.

– Shawn Pratt, MC&MCA President, American Masonry Restoration





**Fort Snelling Memorial  
Marker Wall  
MINNEAPOLIS, MN**

*Category:* Masonry Commercial – Natural or Cultured Stone  
*Owner:* U.S. Department of Veterans Affairs  
*Architect/Designer:* Anderson Engineering  
*General Contractor:* Povolny Group  
*Masonry Contractor:* Donald R. Frantz Concrete Construction, LLC

**Lincoln Park  
Middle School  
DULUTH, MN**



*Category:* Greater Minnesota - Masonry Commercial – Interior Decorative CMU  
*Owner:* Duluth Public Schools ISD 709  
*Architect:* LHB  
*Construction Manager:* Kraus Anderson Construction Company  
*Masonry Contractor:* Rice Lake Construction Group



**Futterer Residence  
MINNEAPOLIS, MN**

*Category:* Residential Concrete - Decorative  
*Owner:* The Craig Futterer Residence  
*Concrete Contractor:* Bulach Custom Rock, LLC

**Anderson Student Center  
Hamline University  
ST. PAUL, MN**



*Category:* Masonry Commercial – Manufactured Stone  
*Owner:* Hamline University  
*Architect/Designer:* Shepley Bulfinch  
*General Contractor:* McGough Construction / MG McGrath Inc.  
*Masonry Contractor:* American Masonry Restoration



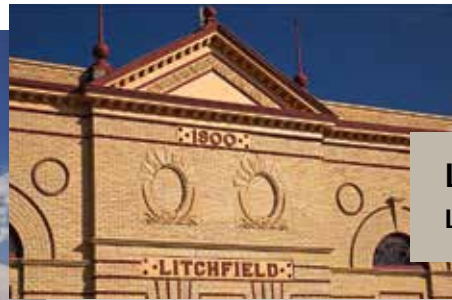


**Hosanna! Lutheran Church**  
LAKEVILLE, MN

*Category:* Commercial Concrete – Innovative & Decorative  
*Owner:* Hosanna! Lutheran Church  
*General Contractor:* Axel H. Ohman, Inc.  
*Concrete Contractor:* Bulach Custom Rock, LLC

**Goodsell Observatory**  
Carleton College  
NORTHFIELD, MN

*Category:* Masonry Commercial - Restoration  
*Owner:* Carleton College  
*Architect/Designer:* Collaborative Design Group  
*General Contractor:* Advanced Masonry Restoration  
*Masonry Contractor:* Advanced Masonry Restoration



**Litchfield Opera House**  
LITCHFIELD, MN

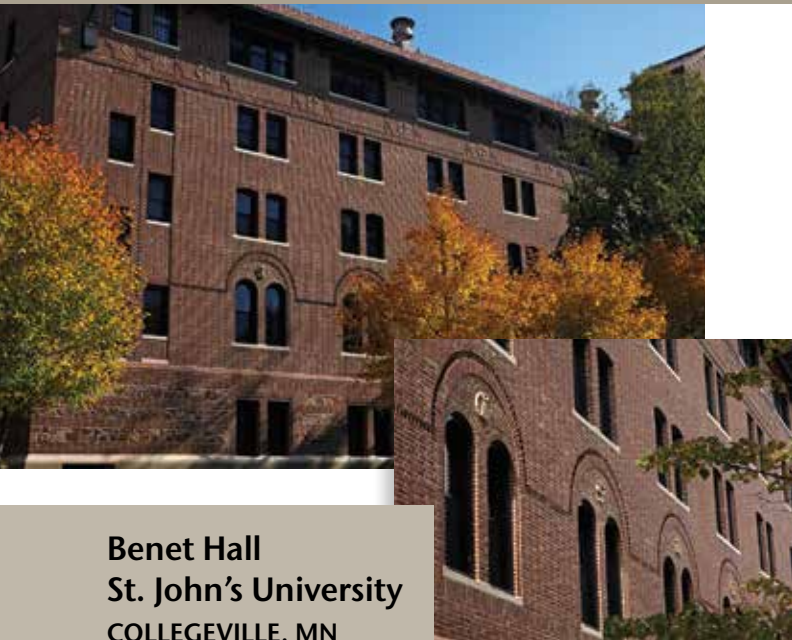
*Category:* Greater Minnesota - Masonry Commercial – Restoration  
*Owner:* Greater Litchfield Opera House Association  
*General Contractor:* American Masonry Restoration  
*Masonry Contractor:* American Masonry Restoration

**Ten-E Packaging Services**  
NEWPORT, MN

*Category:* Masonry Commercial – Exterior Decorative CMU  
*Owner:* Ten-E Packaging Services  
*Architect:* Michael Huber Architects  
*Construction Manager:* Meisinger Construction Company, Inc.  
*Masonry Contractor:* Donald R. Frantz Concrete Construction, LLC







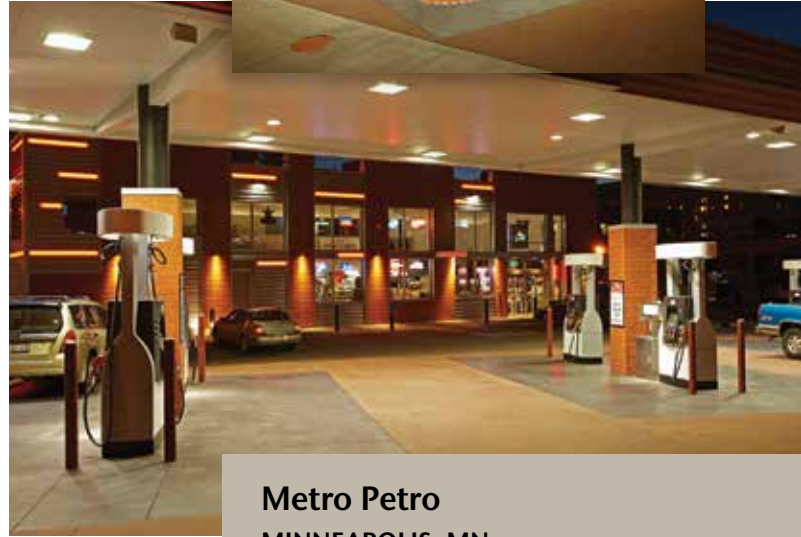
**Benet Hall**  
**St. John's University**  
**COLLEGEVILLE, MN**

*Category:* Greater Minnesota - Masonry Commercial – Public Use  
*Owner:* St. John's University  
*Architect/Designer:* BKBM Engineers  
*General Contractor:* American Masonry Restoration  
*Masonry Contractor:* American Masonry Restoration



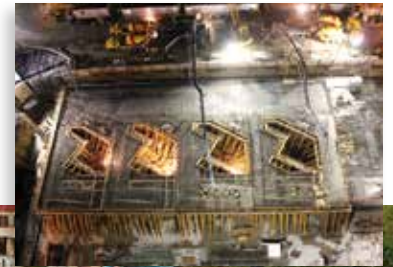
**Oaks Station**  
**MINNEAPOLIS, MN**

*Category:* Masonry – Residential & Mixed Use  
*Owner:* Oaks Properties, LLC  
*Architect/Designer:* Kaas Wilson Architects  
*General Contractor:* Frana Companies  
*Masonry Contractor:* Northland Concrete & Masonry, LLC



**Metro Petro**  
**MINNEAPOLIS, MN**

*Category:* Commercial Concrete – Functional/Industrial  
*Owner:* Metro Petro  
*Concrete Contractor:* Bulach Custom Rock, LLC



**Richard O. Jacobson Building**  
**ROCHESTER, MN**

*Category:* Greater Minnesota - Commercial Concrete – Structural  
*Owner:* Mayo Clinic  
*Architect/Designer:* AECOM  
*General Contractor:* Gilbane Knutson  
*Concrete Contractor:* Knutson Construction Services Rochester, Inc.



1711 WEST COUNTY ROAD B  
 SUITE 207 SOUTH  
 ROSEVILLE, MN 55113  
 651-293-0892  
**MCMCA.COM**